

From April 2024, **Plastic** disposal methods will change!

	Untill March 2024	New!	From April 2024
Category	Items for community recyclables collection		Plastics
Collection Frequency	Once a month (Community recyclables collection)		Once a week
Collection points	Recyclables collection station		Collection points for burnable waste
How to dispose	Place in collection containers		Place them in a clear bag with the contents visible and tie it properly
Items to be collected	Food Trays Plastic containers (for foods) Styrofoam Plastic Bottle Caps		Plastics ※Refer to “○Items that can be disposed as plastic waste” and “×Items that cannot be disposed of as plastic waste” on the reverse side
Others	Community recyclables collection for the above items will end at the end of March 2024		Items can also be brought directly to Recycle Plaza

● List of collection days for plastics

Name of Community		Collection days
Yawata 八幡	Yawata (except 東部Toubu area), Shimizugaoka, Teramotodai, Yawatashinmachi, Hirano, Awara 1-chome, Yanagihana, Igasaka, Teramotoshinmachi	Every Tuesday
Tsutsujigaoka つつじが丘	Tsutsujigaoka	
Toubu 東 部	Yawata (東部Toubu area) [Ikeshita, Oohirachi, Kanuemonzawa, Kitayashiki, Gishichiyama, Sasabasama, Shinmichi, Jyoujiyu, Jyumoku, Soyama, Takane, Nabeyama, Nishiooshimizu, Nezaki, Handamichi, Higashiooshimizu, Higashioohirachi, Marune, Miyamaguchi, Minamioohirachi], Hara, Nishitatumigaoka, Minamitatumigaoka, Tatsumigaoka, Higashinanamagari	Every Friday
Souri 佐 布 里	Souri, Nishinodai, Awara 2-chome, Souridai Umegaoka	
Shinchi 新 知	Shinchi, Midorimachi, Asakuramachi, Shinchidai, Shinchihigashimachi, Shinchinishimachi	Every Monday
Okada 岡 田	Okada, Parts of Hinaga [Akasaka, Nakaishine, Futamata], Minamidani, Fukikomi, Agarido, Okadamisatomachi, Okadamidorigaoka	
Kyokutou 旭 東	Daikouji, Hinagadai, Shinhiromi, Kyokutoudai, Ooso, Parts of Shinmaiko [Ubayama, Kuchishinzo, Sawatari]	
Kyokuhoku 旭 北	Hinaga (except some), Shinmaiko (except some), Shinmaikohigashimachi, Asahi 1~4-chome, Nagaura, Hinagahigashida	Every Thursday
Kyokunan 旭 南	Parts of Shinmaiko [Ochi, Ooguchi, Oose, Deguchi, Myouchiyama, Ryu], Ookusa, Kanazawa, Kyokunan, Asahi 5.6-chome	
Minamikasuya 南 粕 谷	Minamikasuya, Minamikasuyashinkai, Minamikasuyahonmachi, Minamikasuyahigashizaka, Kanda	

※Collection will be conducted as usual even if the collection day falls on a national holiday, except on New Year's Day.

※Collection points at district boundaries may have different collection days, so please check the signs at the collection points.

※Collection dates during the year-end and New Year's holidays will be announced in “広報ちた Koho Chita”.

Garbage and Resource
Separation Application

さんあ〜る

Now
Available !

Garbage
Separation Guide

Calender

Information



Download on the
App Store



ANDROID APP ON
Google play



Items that can be disposed of in plastic waste

Plastic containers and packages



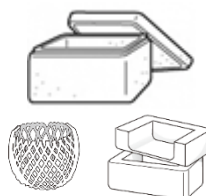
Use this mark as a reference



Trays, Cups, Containers



Bottles, Caps



Styrofoam,
Cushioning materials



Bags, Packages for refills,
Labels on bottles, etc.

Plastics

Products made largely of plastic



Daily necessities



Kitchen utensils



Stationery



CD/DVD



Toys, etc.



Items that cannot be disposed of in plastic waste

Items to be disposed of in "burnable waste"



Items that cannot be cleaned
Items that may become infected
※ Return needles to medical institution

Dispose of in PET bottle waste

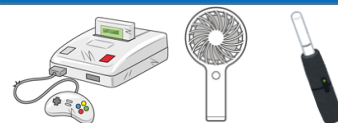
※ It can be put out for community recyclables collection once a month.



PET bottle
itself only

※ Plastic labels and caps should be removed before disposing of them as "plastic waste".

Items to be disposed of in small household appliances



Items that run on electricity or batteries, or that may cause a fire

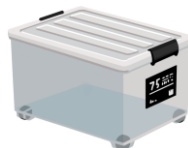
※ Mobile batteries, lithium-ion and other rechargeable batteries are put out to "small rechargeable batteries".

Items to be disposed of in "Non-burnable waste"



Items that may cause injury

Items to be disposed of in large plastic products



Items with a length of 50 cm or more on a side
※ If the length of one side is cut to less than 50 cm, it can be disposed of in the "Plastic waste"

Thickness of 5 mm or more
※ Styrofoam, etc., can be disposed of as "plastic waste" even if it is 5 mm or more.

How to dispose plastics

① Rinse the dirty with water



② Place in a transparent or semi-transparent bag that allows the contents to be seen

※ Do not double-bag

Double bagging means... putting plastics in a small bag and then putting them in a bag for collection.



③ Put out at the same collection point as burnable waste on the designated days of the week.

At collection sites with crow nets, place waste securely inside the net and put it out by 8:00 a.m.



Milky white plastic bags and yellow designated garbage bags are not acceptable

e.g. double bag

